



Premium **EM-1**

The premium EM-1 ceiling mount air-conditioning evaporator comes with the industry's most modern, efficient and high technology, such as transverse blower technology and long life

motors. Yet, it's still very easy to service and to install thanks to its smart design. The premium EM-1 is the lowest profile and lightweight evaporator on the market.

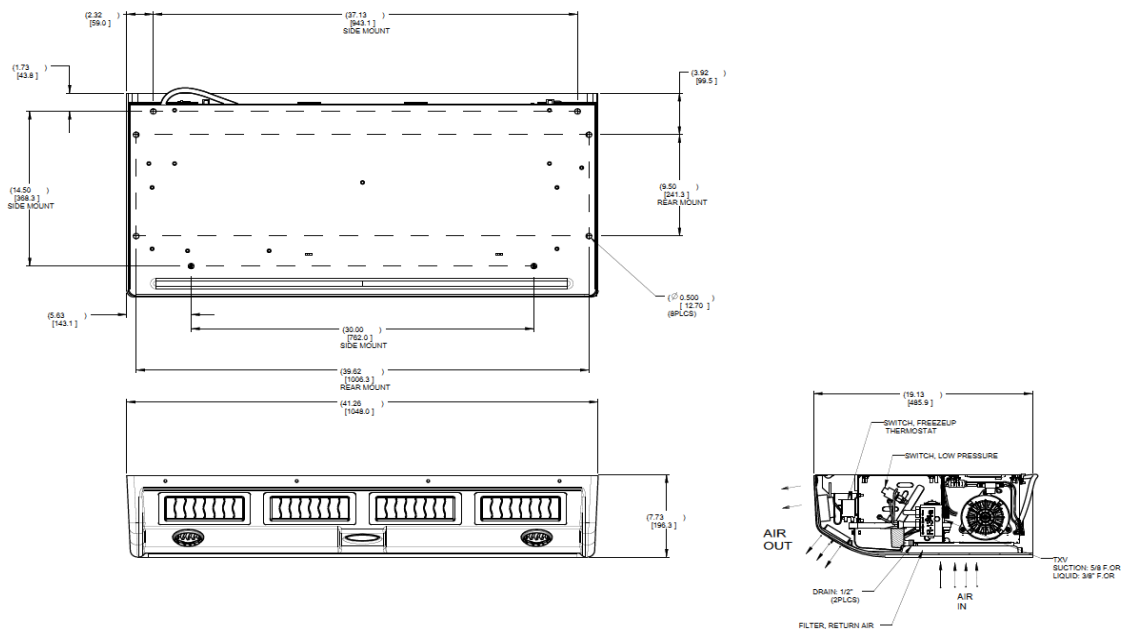


Features

- Transverse blower technology
- New extreme long life motors
- Available for front and rear ceiling mount
- Galvanized steel frame
- State of the art enhanced coil
- Attractive plastic cover available in two colors

Benefits

- Provides uniform air flow across the slanted coil which increases evaporator performance and efficiency.
- Lowest noise levels and maximum air throw
- Offers unparalleled 10,000 hours usage
- Flexible to fit any application
- Strength and durability
- Maximum capacity and efficiency



Technical Data

Cooling capacity	60000 Btu/hr (15.1 kW) IMACA ^[1] 27000 Btu/hr (6.8 kW) ARI ^[2]
Max amperage requirement	27 A @ 13.5 V dc (High Speed) Voltage
Air flow	709 CFM (1205 m ³ /hr) ^[3]
Refrigerant	R134a
Length	41.25 (1048 mm)
Width	19.13 (486 mm)
Height	7.73 (196 mm)
Weight	59 lbs (27 kg)
Condensate drain connection	½ (12.7 mm) O.D (dual drains)
Cover color	Snow White or Dove Gray

[1] IMACA conditions: 100°F (38°C) / 90°F (32°C) / 50% RH

[2] ARI conditions: 95°F (35°C) / 80°F (27°C) / 50% RH

[3] Airflow is tested at super high speed with cover and louvers fully installed, 0" static, 13.5 VDC

