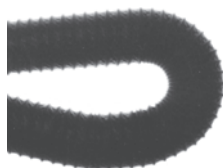


Air Hose



23-0102
2" Low friction, non collapsible,
sold in length of 47" (1200 mm)
23-0104
2.5" Low friction, non collapsible,
sold in length of 47" (1200 mm)



23-0015	2"	Collapsible	sold in multiples of 50 feet
23-0020	2.5"	"	"
23-0025	3"	"	"
23-0035	3.5"	"	"
23-0040	4"	"	"

Round Louvers



27-1211
max 3" diameter stainless steel
27-0183
3.16 - 4.5" diameter stainless
steel



23-0045
Nylon strap up to 3"
diameter

Louvres shown have diameters of 3.94" (100 mm) and are manufactured of super tough nylon. The ST801 was specially designed for extreme low temperatures. The louvers must be used with any of the adapters below.

Adapters for 23-0005, 45, 47 & 86



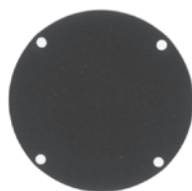
23-0048
Adapter, Nylon 66



23-0017
Hose adapter, 2"
23-0018
Hose adapter, 2.5"



23-0032
Hose adapter, 3",
Nylon 66



23-0006
Cover plate (ABS)



23-0143
Hose adapter,
60mm, Nylon 66

Mounting hole Ø 3.1" (79mm) . Screw hole 4 x Ø 84 mm.

Round Louvers



23-0171
Rotates and closes,
adapter include

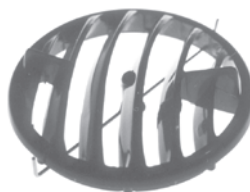


23-0172
Rotates and closes, hose
adapter 2" included

Above louvers are manufactured of prime grade ABS. The overall Ø 2.75" (70 mm), screw hole Ø 2.204" (56 mm) (4x), mounting hole Ø 2.10" (53.5mm). Adapter will also accept snap in installation without screws.



23-0100
Rotates and closes comes with 4" hose
adapter (ABS) . Four screw holes at Ø 4.93"
(125.2mm)
Used in the RV and motor home industry.



23-0065
Non adjustable, mounts in 3"
(76.2mm) hole.
Mounting spring included.
Low cost (ABS) .

Ball Type Louvers (ABS)



23-0164
Black ball, hose adapter 2" included
23-0067
Black ball, hose adapter 2.5" included



23-0057
Chrome ball, hose adapter
2.5" included



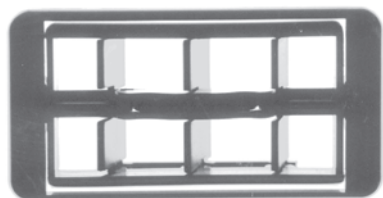
23-0087
Black ball, adapter included
23-0097
Large black ball, adapter included
mounts in a Ø 3" (76.2mm) hole.

Louvers
23-0164, 23-0057, 23-0067, and 23-0087
Mount in a Ø2.5" (63.5 mm) hole.



23-0098
Large black ball, hose adapter Ø 2.5" included
Louvers 23-0097 and 23-0098 mounts in a Ø 3"
(76.2mm) hole.

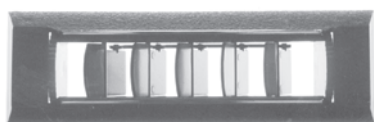
Rectangular and Square Louvers (closable and adjustable)



23-0042
3.65" (92.2mm) x 1.88" (47.8mm) , (ABS)
snaps into hole
3.41" (86.6mm) x 1.72" (43.7mm)



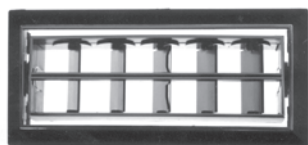
23-0027
2.45" (62.2mm) x 2.44" (62mm) , (ABS)
2" hose adapter included, snaps into hole
2.2" (55.9mm) x 2.375" (60.3mm)



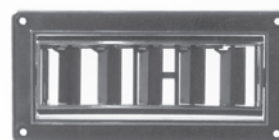
23-0029
6" (152.4mm) x 1.87" (47.6mm) , (ABS)
snaps into hole
5.73" (145.5mm) x 1.72" (43.7mm)



23-0046
6" (152.4mm) x 1.562" (39.7mm), (ABS)
snaps into hole
5.75" (146mm) x 1.375" (34.9mm)



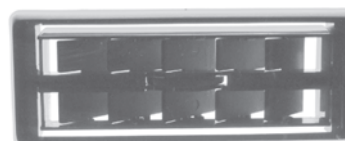
23-0055
7.1" (180.3mm) x 3.3" (83.8mm) , (ABS)
snaps into hole
6.38" (162.1mm) x 2.48" (63mm)



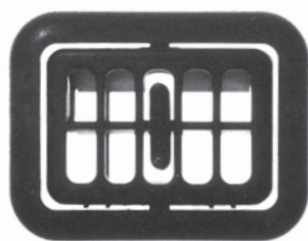
23-0053
5.43" (137.9mm) x 2.68" (68.1mm) ,
(ABS) fits hole
4.75" (120.7mm) x 2" (50.8mm)



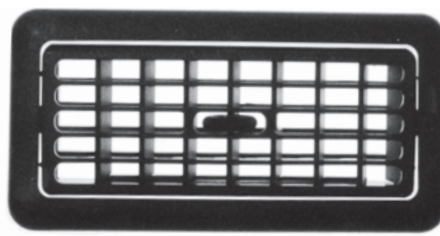
23-0054
Adapter for 23-0053 with 2.5" (63.5mm)
hose adapter. (ABS)



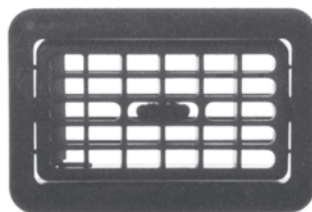
23-0116
5.43" (138mm) x 2.17" (55mm) , (ABS)
snaps into hole
5.12" (130mm) x 1.81" (46mm)

Rectangular and Square Louvers (closeable & adjustable)


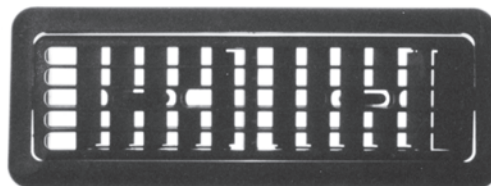
23-0173



23-0175



23-0174



23-0176

DIMENSIONS						
ABOVE LOUVERS SNAP INTO 1/16" (1.59mm) TO 1/8" (3.19mm) WALL THICKNESS OPENINGS						
Part No.	Overall Size		Mounting Hole		Snap-in	Hose* Adapter
	in.	mm	in.	mm		
23-0173	2.62 x 3.45	66.5 x 87.6	2.02 x 2.85	51.3 x 72.4	yes	no
23-0174	3.82 x 5.64	97.0 x 143.3	2.82 x 5.13	71.6 x 130.3	yes	no
23-0175	3.82 x 7.87	97.0 x 199.9	2.85 x 7.34	72.4 x 186.5	yes	no
23-0176	3.82 x 10.11	97.0 x 256.8	2.82 x 9.61	71.6 x 244.1	yes	no

*Louvers available on request with Ø2.5" (63.5 mm) hose adapter as a one piece design.



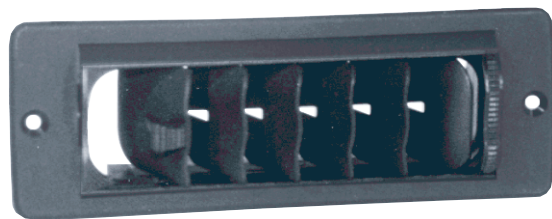
23-0177



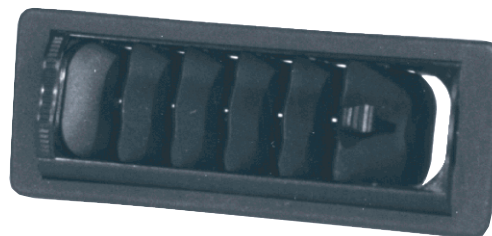
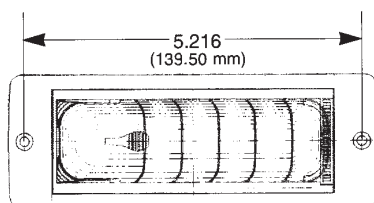
23-0178

DIMENSIONS					
ABOVE LOUVERS SNAP INTO 1/16" (1.59mm) TO 1/8" (3.19mm) WALL THICKNESS OPENINGS					
Part No.	Overall Size		Mounting Hole	Snap-in	Hose* Adapter
	in.	mm			
23-0177	2.17x 6.08	55.1 x 154.4	request sample	yes	No
23-0178	2.17 x 6.08	55.1 x 154.4	request sample	yes	No

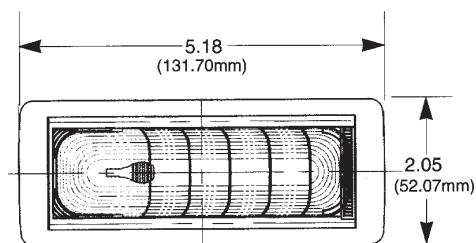
Rectangular and Square Louvers (closable and adjustable)



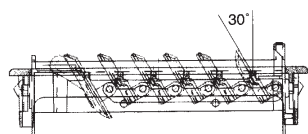
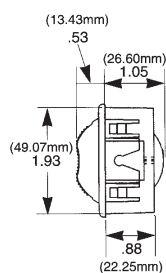
23-0186



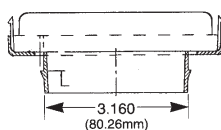
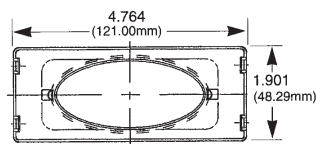
23-0145



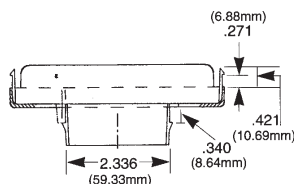
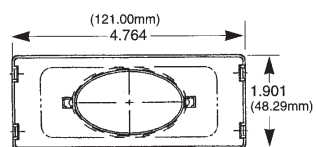
Louver Vents



Hose Adapters



23-0203 Hose Adapter \varnothing 2.5" (63.5 mm)



Hose Adapter \varnothing 2" (50.8 mm)

Windshield Louvers



23-0094
9.33" (237mm) x 1.18" (30mm) .
Two centered screw holes at 8.70" (221mm) .(ABS)



23-0115
8.07" (205mm) x 1.02" (26mm) (ABS)
Snaps into oblong hole 7.80" (98mm) x 0.69" (17.5mm) (ABS)



23-0095
As 23-0094 but angled 40° from vertical line

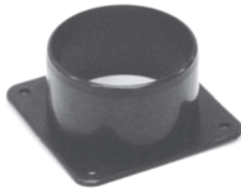
Hose adapters



23-0110 /2"
2.36" (60mm) , four screw holes Ø 2.56" (65mm) , mounts in 2" (50.8mm) hole (ABS)
23-0125 /2.5"
2.91" (74mm) , four screw holes Ø 3.25" (83mm) , mounts in 2.48" (62.8mm) hole (ABS)



23-0049 y-splicer 2.5" (ABS)



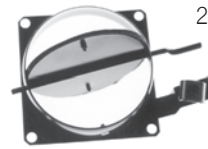
23-0141
60mm, nylon 66



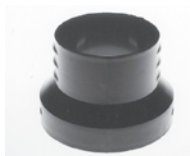
23-0051 Reducer from 2.5" - 3" (ABS)



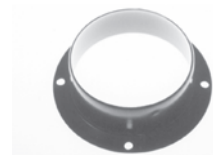
23-0037 2" Snap in mounting (ABS)
23-0038 2.5" Snap in mounting (ABS)
23-0039 3" Snap in mounting (ABS)



23-0129 4" Steel with flapper door: four screw holes at Ø 5.30" (134.6mm)



23-0050 Reducer from 2.5" - 2" (ABS)



23-0091 3" Steel four screw holes at Ø 3.54" (90mm)

23-0090 4" Steel four screw holes at Ø 4.72" (120mm)

23-0142 3.5" (88mm) , nylon 66

Recirculating Air Grills



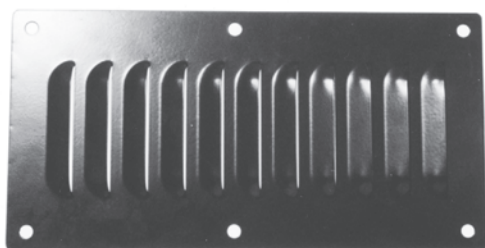
23-0084

Grill 5.51" (140mm) high x 6.18" (157mm) wide (ABS)
For opening 4.96" (126mm) high x 5.31" (135mm) wide
Four screw holes at 5.12" (130mm) high x 5.79" (147mm) wide.



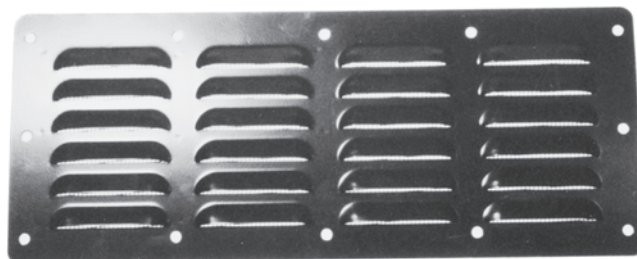
23-0041

Grill 5.51" (140mm) high x 12.36" (314mm) wide (ABS)
For opening 4.96" (126mm) high x 11.18" (284mm) wide
Four screw holes at 5.12" (130mm) high x 11.97" (304mm) wide.



24-0025

Grill Steel 12" (304.8mm) x 6.13" (155.7mm)



23-0075

Grill Steel with metal mesh 7.50" (190.5mm) x 18.5" (469.9mm)