



Mobile Climate Control
On Road



Small but powerful



PN: 89-0033

EcoLine 12 – low profile climate control for minibuses and mid-sized buses

EcoLine:

Great performance, very compact, lowest weight for the size, all under an attractive cover



The EcoLine is the new standard for mini bus A/C. With its improved performance,

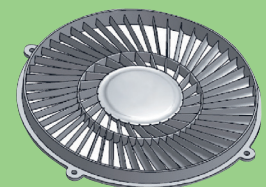
low weight and low-key appearance, it is the easy choice if you're looking for a reliable A/C for your minibus.

To keep weight to a minimum, EcoLine models are manufactured with aluminum components and ABS covers. Exceptional engineering has allowed us to lower refrigerant charge, while increasing performance capabilities.



Summary of advantages

- Attractive low-profile design
- Low refrigerant charge
- Low weight thanks to aluminium parts and ABS covers
- Improved performance, using high performance heat exchangers
- Easy to maintain
- Easy to install
- Low product life cycle costs



EcoLine 12

The EcoLine 12 is the next level of minibus A/C, specially adapted for minibuses with extra comfort requirements.

Choose between free blow or ducted options. The cooled/heated air blows through ducts, allowing passengers to adjust air flow to their individual preference. With more cooling power it will give quicker cooldown, and of course higher comfort in hot climates. Very low profile.

Comes equipped with four double radial evaporator/heater blowers and two condenser fans.



Features Include:

- larger capacity
- Fully integrated unit
 - with condenser and evaporator
- High performance MCX coil technology

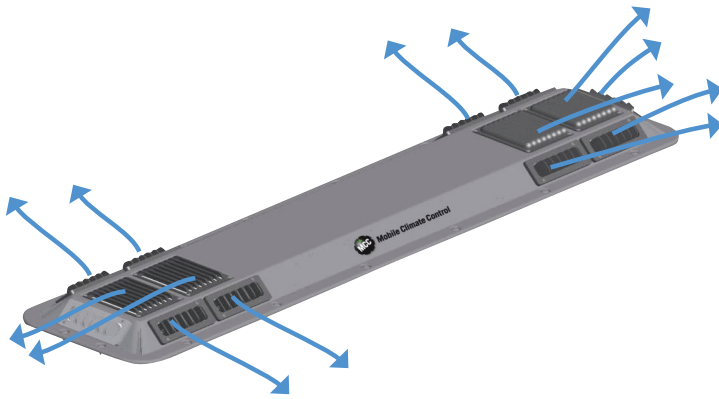


Figure: (Option 1) Air distribution plenum.

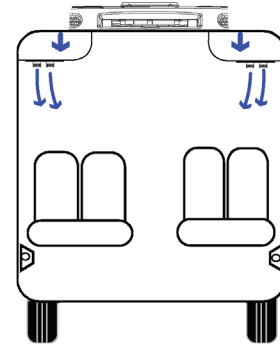
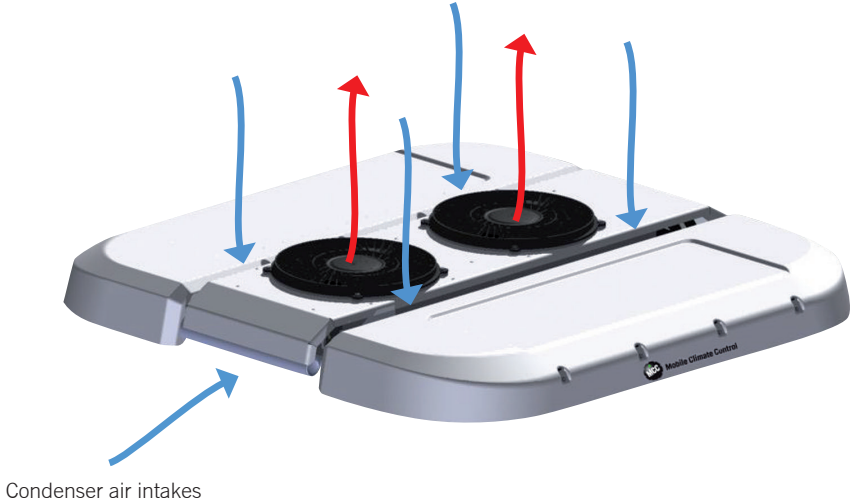
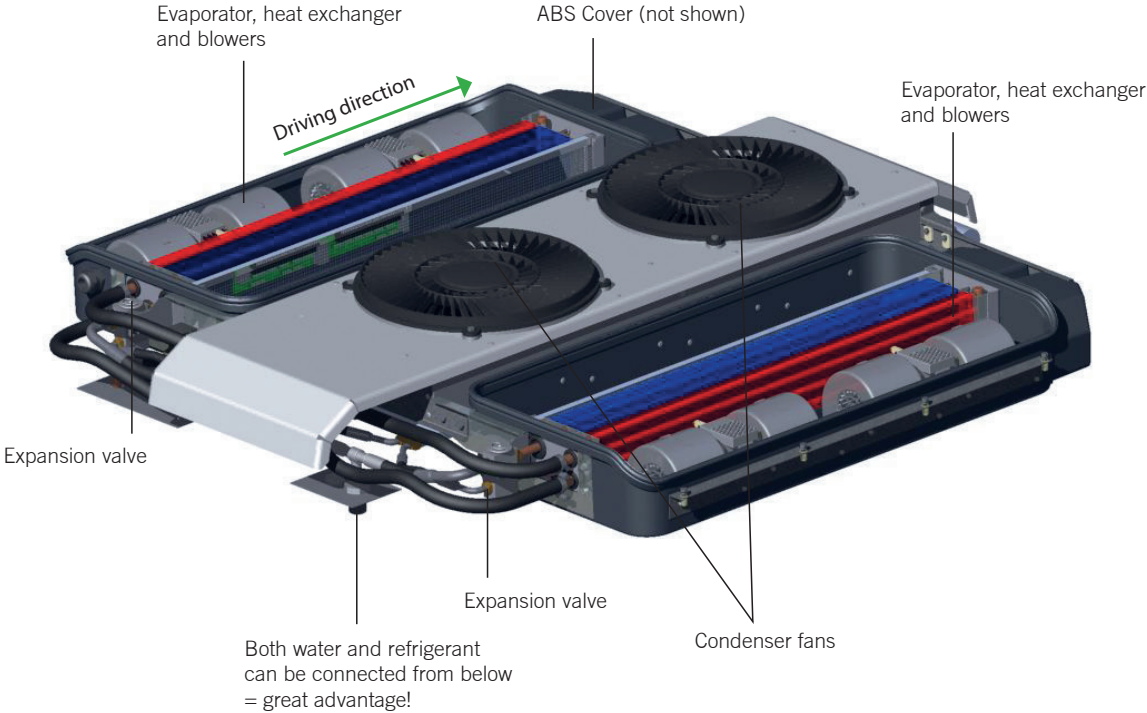


Figure: (Option 2) The EcoLine 12 blows directly into the minibus ducts.

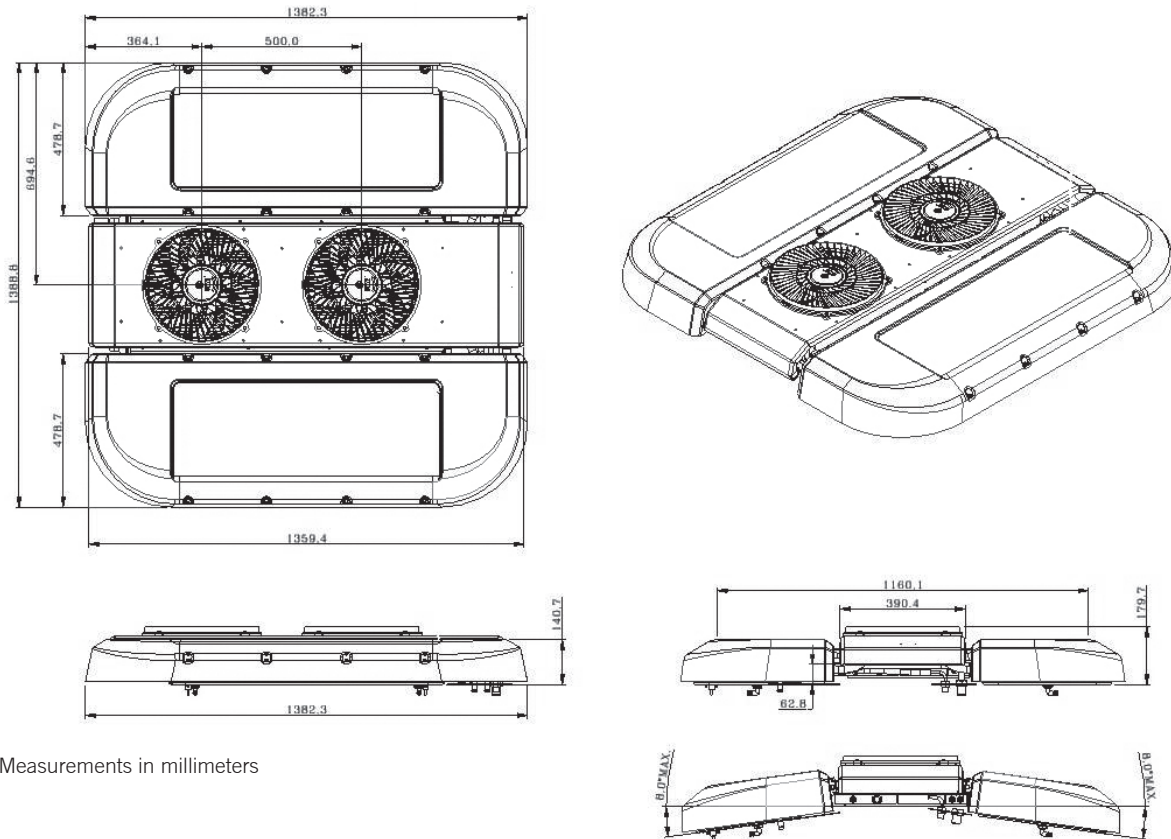
Overview of the components

EcoLine 12: Major components



Dimensions

EcoLine 12



Measurements in millimeters

Technical Data

Application	Minibuses
Cooling capacity	66000 Btu/hr (19.3 kW) IMACA ^[1] 41000 Btu/hr (12 kW) ARI ^[2]
Heating capacity	54000 Btu (15.9 kW)
Voltage	12/24V
Width	54.72" (1390 mm)
Length	54.53"(1385 mm)
Height ^[3]	7.09" (180 mm)
Air flow evaporator, max	1200 CFM (2000 m ³ /h)
Current consumption, max	76A (12V) 38A (24V)
Weight (total)	130 lbs (59 kg)

[1] ARI conditions: 95°F (35°C) / 80°F (27°C) / 50% RH
 [2] IMACA condition: 100°F (38°C) / 90°F (32°C) / 50% RH
 [3] + 0.8" (20 mm) for Sprinter bus van rails

Every passenger deserves the best possible vehicle climate with MCC products

Our mission is to create climate comfort by providing exceptional performance

