



Heater **Whisper UW-9**

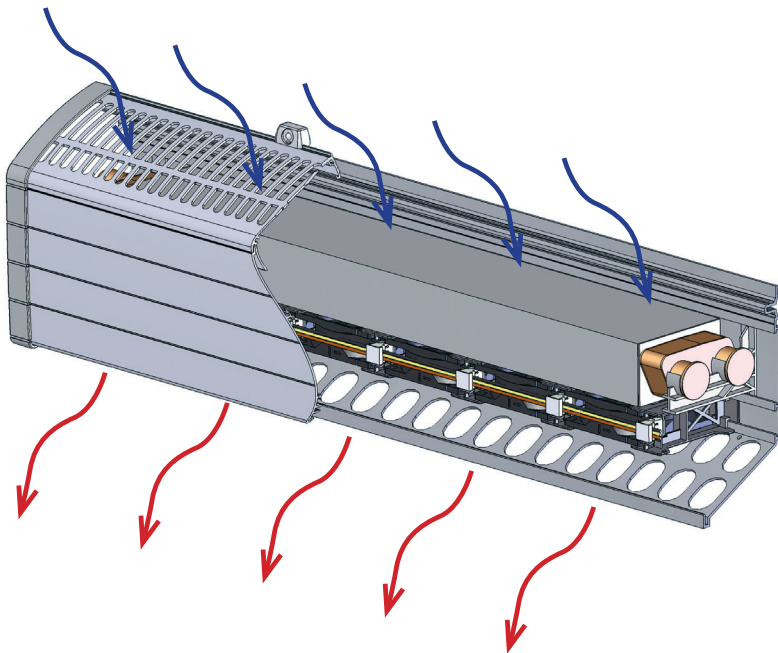
Very compact heater

Having the same profile as the UC-9 convector, MCC heater whisper UW-9 is the ideal wall mounted heater when extra heat output is required.

As a part of the UC-9 family, the UW-9 heater is compact, it is also highly customizable suitable for motor coaches

and transit buses. The unit consists of heat exchanger with configurable water connections, two speed fans.

The UC-9 can be also be used in as a standalone heating unit or in combination with other heaters and convectors. An electrostatic or mesh filter can also be added as an option.

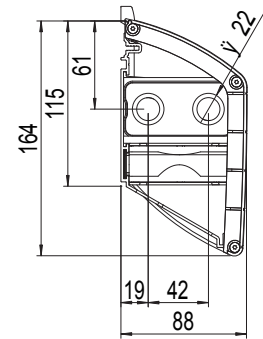
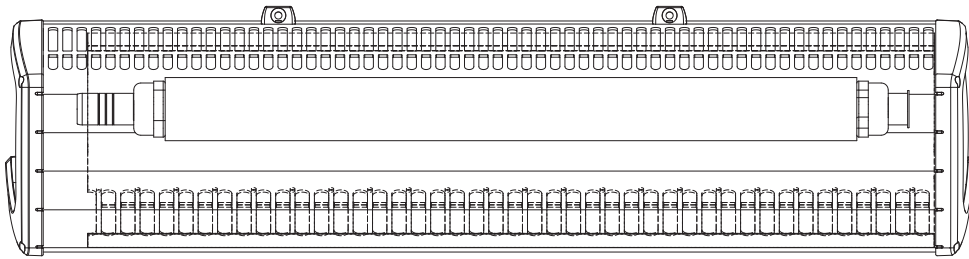


Features

- Smooth air distribution
- Rugged design
- Suitable for sloping floors
- Flexible design (3-18 fans)
- Two speed long life fans
- Lightweight

Heaters **Whisper UW-9**

MCC Heaters



Dimensions in mm

Technical Data

Heat ^[1]	15013 Btu/hr (4.4 kW) Q_{80}	18767 Btu/hr (5.5 kW) Q_{100}
Air flow @ 28V (6 fans)	61 CFM (182 m ³ /h)	
Coolant connection	Copper Ø 0.9" (22 mm)	
Voltage	12 or 24V	
Height	6.5" (165 mm)	
Lengths	10-79" (250-2000 mm)	
Cover sections	Anodized aluminum	

[1] The Q_x value stands for the temperature difference between the water inlet temp and the air temp in the room where the heat exchanger is. For instance water inlet temp +80°C and air temp +20°C is known as Q_{60} .

