

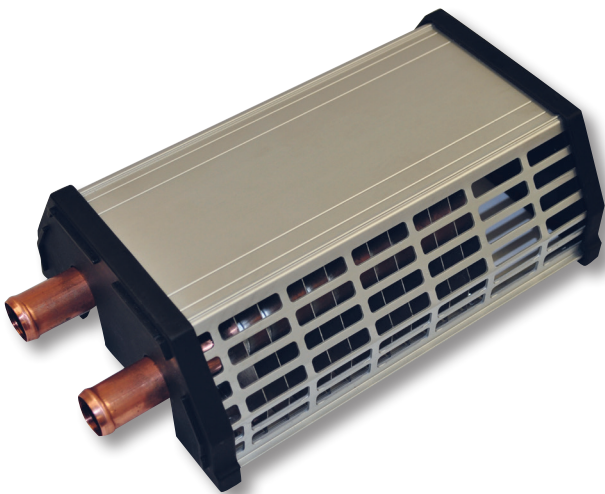


Convector **P-90**

Highly efficient and comfortable bus heating

MCC Convector P-90 is based on a twin copper pipe system that supplies efficient heat in a space saving design. Can be used as a standalone unit or part of a complete heating

system. Transition pieces are available to accommodate bulkheads, wheel wells and doors.

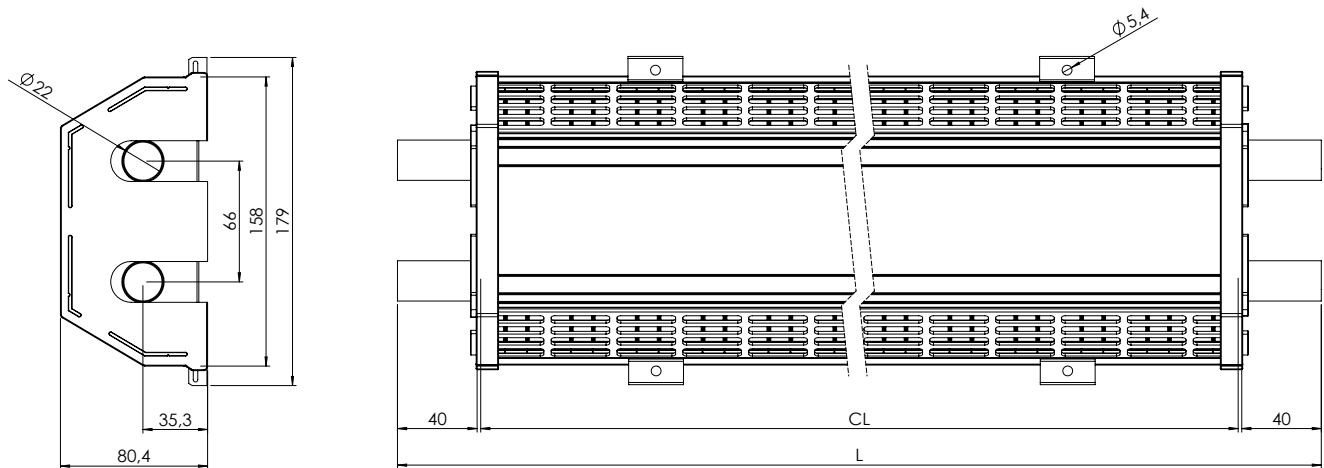


Features

- Suitable for heating buses, coaches and other vehicles
- Designed for vehicles with water/glycol heating systems
- Quiet and draft-free heating
- Maintenance free
- Robust design
- Twin pipe design for optimized heat output

Convactor P-90

MCC Convectors



Dimensions in mm

Technical Data

Heat output	1880 Btu/hr (0.55 kW) $Q_{60}^{[1]}$	3347 Btu/hr (0.98 kW) $Q_{100}^{[1]}$
Piping	Copper Ø 0.8" (22 mm)	
Weight	25 lbs/ft (3.14 kg/m)	
Maximum length	197" (5 m)	
Color	Silver anodized aluminium	
	Please contact your MCC representative for more details	

[1] The Q_x value stands for the power in kW emitted from a unit length (1 m) of the convactor at a temperature difference between coolant inlet and room air equal to the subscript (x).

