



Compressor Valeo **TM-16**

Provides the largest cubic displacement in its class

At 10 in³ (164 cm³) displacement, the TM-16 compressor has the largest displacement in the light transit segment today.

Its capacity at idle is virtually unmatched in the marketplace and has a proven track record of superior durability.

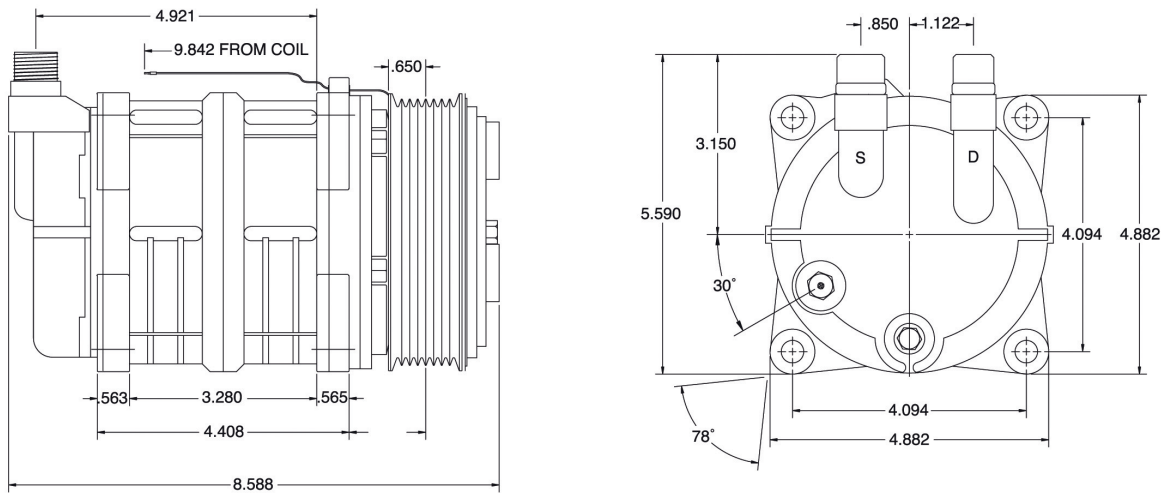


Features

- Six cylinder, balanced swash plate design offers low pulsation noise, quiet and smooth operation, less vibration and lower horsepower requirements
- Ball and shoe design promotes lubrication for better compressor durability
- Lip shaft seal assures excellent sealing integrity and extends compressor life
- Needle bearings insure high durability for long life and high speed operation
- Coated steel swash plate provides additional protection during liquid slugging, and high load conditions

Compressor Valeo TM-16

MCC Compressors



Technical Data

| | |
|----------------------|---|
| Rotation | CW or CCW |
| Max speed | 700 – 6000 rpm |
| Clutch coil | 12 or 24 VDC |
| Displacement | 10 in ³ (164 cm ³) |
| Number of pistons | 6 |
| Refrigerant | R134a |
| Pulleys | 2A/6PK/8PK/10PK |
| Mounting | Ear or direct |
| Unloading steps | N/A |
| Oil charge | ZXL 6.6 fl.oz (180 cm ³) |
| Weight (with clutch) | 15.7 lbs (7.1 kg) |


Mobile Climate Control